

MONTHLY MEMBERSHIP PROGRESS REPORT

LOCATION TEXAS

District 2 A2

Results as of: 5/31/2022

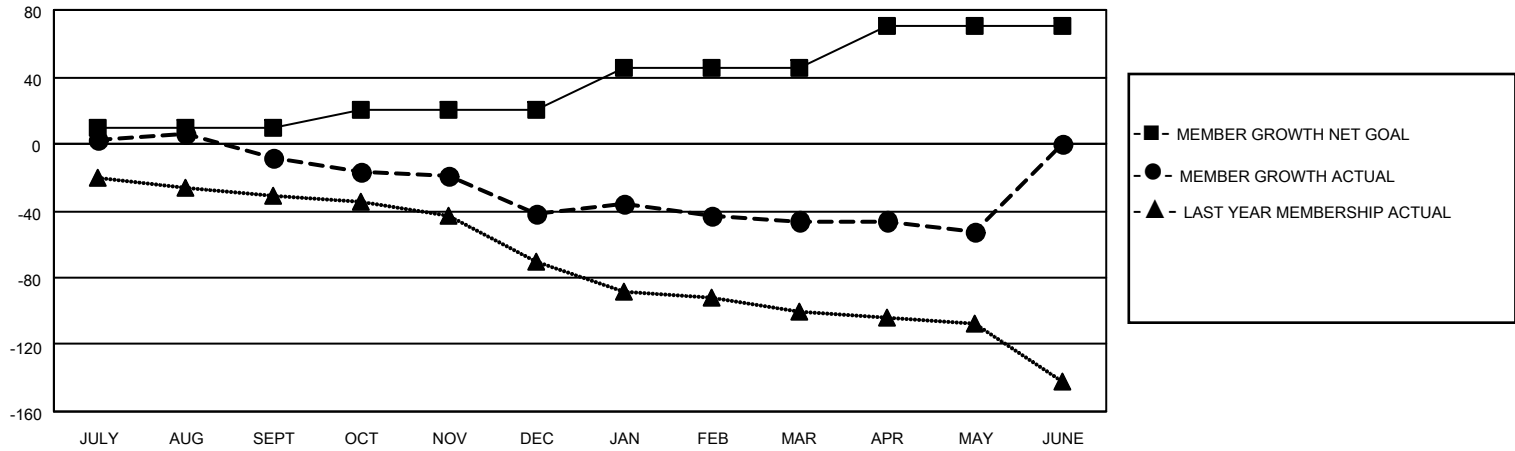
Clubs			
RESULTS FOR 2021-2022			
QUARTER	NEW CLUB GOAL	NEW CLUBS	DROPPED CLUBS
JULY/AUG/SEPT	0	0	0
OCT/NOV/DEC	0	0	1
JAN/FEB/MAR	1	0	0
APR/MAY/JUNE	1	0	0

Members			
RESULTS FOR 2021-2022			
QUARTER	MEMBER GROWTH NET GOAL	MEMBER GROWTH ACTUAL	DROPPED MEMBERS ACTUAL (including transfers)
JULY/AUG/SEPT	10	36	38
OCT/NOV/DEC	10	20	52
JAN/FEB/MAR	25	40	41
APR/MAY/JUNE	25	33	36

GOALS AND ACTUAL NEW CLUBS CUMULATIVE



GOALS AND ACTUAL MEMBERS CUMULATIVE



DROPPED CLUBS: 1

33 CLUBS OF 63 ADDED 1 OR MORE NEW MEMBERS

GENDER DISTRIBUTION

DROPPED MEMBERS

DECEASED	21
CLUB CANCELLED	14
OTHER	131
TOTAL	166

[CLICK HERE FOR CUMULATIVE MEMBERSHIP DATA](#)

MALE	886 (60.89%)
FEMALE	569 (39.11%)
NON BINARY	0 (0.00%)
PREFER NOT TO ANSWER	0 (0.00%)

TOTAL FAMILY UNIT MEMBERS 284

FAMILY MEMBERS PAYING HALF DUES 144